



October 2, 2018

TO: NHD Stakeholders of West Virginia

FROM: Maneesh Sharma, Project Leader, WV GIS Technical Center, WVU

SUBJECT: Final Progress Report for Updating National Hydrography Dataset (NHD) in West Virginia for areas affected by surface disturbance and hydrologic change. Project funded by EPA Grant OS83585101-0. Project Duration: 10/01/2015 to 09/30/2018

TIME PERIOD: October 2015 - September 2018

Dear NHD Stakeholders:

Here is the final progress report regarding updates to the National Hydrography Dataset (NHD) in West Virginia. Both the National Hydrography Dataset (NHD) and Watershed Boundary Dataset (WBD) are used to represent surface water on the National Map (<http://nhd.usgs.gov/>). The USGS is the primary steward for NHD, while the NRCS is the principal steward for WBD.

Highlights

- All watersheds checked for stream modification due to surface disturbance with emphasis on coal mining
 - 28,095 stream segments checked
 - 3,494 segments added/replaced
 - 2,509 stream segments modified
 - 1,602 stream segments deleted
- 29 watersheds checked for floodplain error
 - 36,816 segments checked
 - 1,819 segments modified
- USGS has incorporated NHD surface disturbance edits in the national database. Geodatabase for the entire state can be downloaded from the following [website](#).

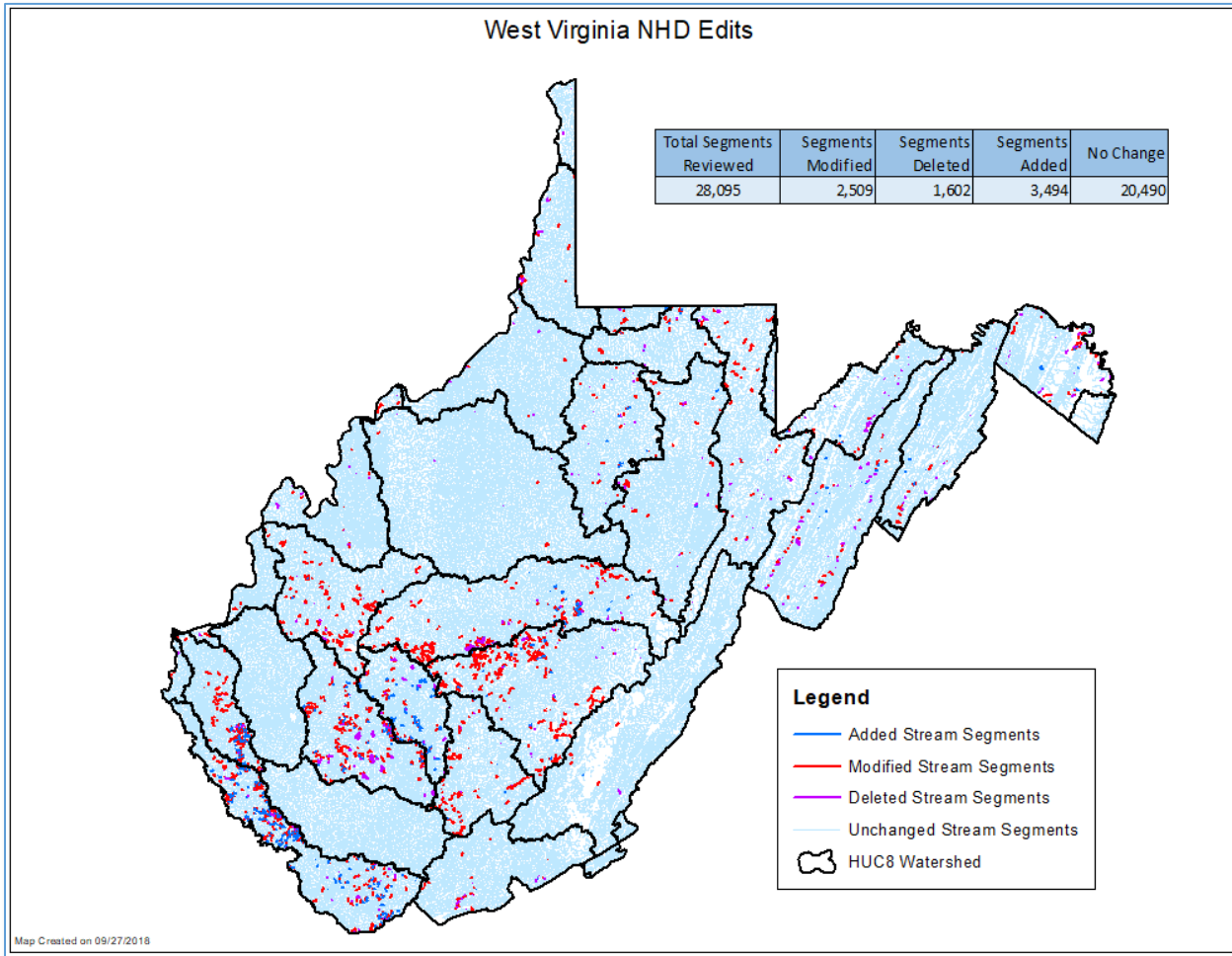
NHD Editing in State

1. Stream segment editing to reflect stream modification due to surface disturbance - Final editing of all watersheds has been completed and 28,095 stream segments have been verified. Water bodies and the stream segments area were revised and modified as needed. A total of 7,605 stream segments have either been digitized, modified or deleted. We have added/replaced 3494, modified 2509, and deleted 1602 stream segments. Table 1 shows the details of work done for each watershed. Figure 1 shows status of edits in each watershed. USGS has already incorporated edits in the national database. For more details about the NHD editing process and methodology see Appendix 1 at the end of the report.

Table 1: Details of NHD edits for reviewed watersheds for surface disturbance

| Watershed | Feature Type | Checked Segments | Replaced/Added | Modified | Deleted |
|--------------------------------|--------------|------------------|----------------|----------|---------|
| LOWER NEW | Stream | 950 | 8 | 169 | 32 |
| | Water Body | | 27 | 3 | 8 |
| GAULEY | Stream | 2305 | 126 | 421 | 58 |
| | Water Body | | 520 | 3 | 50 |
| UPPER KANAWHA | Stream | 1022 | 73 | 250 | 21 |
| | Water Body | | 75 | 3 | 4 |
| LOWER KANAWHA | Stream | 1244 | 2 | 110 | 16 |
| | Water Body | | 0 | 0 | 0 |
| MIDDLE NEW | Stream | 193 | 2 | 42 | 27 |
| | Water Body | | 39 | 1 | 33 |
| ELK | Stream | 1582 | 88 | 218 | 62 |
| | Water Body | | 165 | 0 | 11 |
| COAL | Stream | 3132 | 109 | 251 | 179 |
| | Water Body | | 126 | 0 | 0 |
| TWELVEPOLE | Stream | 473 | 235 | 163 | 13 |
| | Water Body | | 192 | 0 | 9 |
| RACCOON-SYMMES | Stream | 229 | 0 | 8 | 4 |
| | Water Body | | 0 | 0 | 0 |
| BIG SANDY | Stream | 23 | 0 | 3 | 3 |
| | Water Body | | 0 | 0 | 0 |
| GREENBRIER | Stream | 224 | 1 | 9 | 1 |
| | Water Body | | 38 | 1 | 4 |
| TUG | Stream | 1378 | 588 | 271 | 49 |
| | Water Body | | 327 | 6 | 68 |
| UPPER JAMES | Stream | 47 | 0 | 0 | 11 |
| | Water Body | | 1 | 0 | 0 |
| WEST FORK | Stream | 1139 | 26 | 30 | 22 |
| | Water Body | | 276 | 2 | 231 |
| UPPER OHIO | Stream | 76 | 0 | 0 | 2 |
| | Water Body | | 6 | 1 | 11 |
| LOWER MONONGAHELA | Stream | 361 | 11 | 12 | 2 |
| | Water Body | | 57 | 2 | 19 |
| UPPER MONONGAHELA | Stream | 327 | 3 | 21 | 12 |
| | Water Body | | 39 | 10 | 0 |
| UPPER OHIO-SHADE | Stream | 522 | 2 | 15 | 15 |
| | Water Body | | 17 | 0 | 0 |
| UPPER OHIO-WHEELING | Stream | 502 | 0 | 10 | 42 |
| | Water Body | | 7 | 0 | 0 |
| LITTLE KANAWHA | Stream | 972 | 2 | 16 | 37 |
| | Water Body | | 1 | 0 | 0 |
| LITTLE MUSKINGUM-MIDDLE ISLAND | Stream | 667 | 0 | 6 | 24 |
| | Water Body | | 3 | 0 | 0 |
| TYGART VALLEY | Stream | 1326 | 4 | 50 | 34 |
| | Water Body | | 62 | 0 | 13 |
| CHEAT | Stream | 1088 | 2 | 49 | 104 |
| | Water Body | | 24 | 2 | 2 |
| NORTH BRANCH POTOMAC | Stream | 862 | 4 | 12 | 55 |
| | Water Body | | 27 | 1 | 28 |
| SOUTH BRANCH POTOMAC | Stream | 2760 | 16 | 50 | 110 |
| | Water Body | | 9 | 0 | 16 |
| YOUGHIOGHENY | Stream | 91 | 2 | 0 | 2 |
| | Water Body | | 7 | 1 | 4 |
| CONOCOHEAGUE-OPEQUON | Stream | 883 | 6 | 45 | 71 |
| | Water Body | | 53 | 5 | 22 |
| CACAPON-TOWN | Stream | 800 | 13 | 18 | 18 |
| | Water Body | | 55 | 0 | 35 |

Figure 1: NHD edits (surface disturbance) map



2. Stream segment editing for floodplain errors – We have also worked on editing the stream segments that are outside of the floodplain areas. We used FEMA floodplain polygons to cross-check the stream segments. We checked 29 watersheds and modified stream segments that were outside of floodplain. We reviewed 36,816 stream segments and modified 1,819 segments. Table 2 shows details about editing of stream segments in floodplain.

Table 2: Details of edits for reviewed watersheds for floodplain error

| Watershed | MODIFY | NO CHANGE | Total |
|--------------------------------|---------------|------------------|--------------|
| Cacapon-Town | 80 | 1602 | 1801 |
| Conococheague-Opequon | 25 | 1076 | 1127 |
| Shenandoah | 0 | 113 | 114 |
| Upper Monongahela | 106 | 410 | 563 |
| Lower Monongahela | 57 | 240 | 308 |
| Upper Ohio-Wheeling | 42 | 769 | 825 |
| West Fork | 144 | 1260 | 1492 |
| Raccoon-Symmes | 0 | 0 | 4 |
| Lower Kanawha | 205 | 829 | 1038 |
| Upper Kanawha | 230 | 623 | 861 |
| Tygart Valley | 72 | 2324 | 2520 |
| Elk | 66 | 1753 | 2168 |
| Upper Ohio-Shade | 54 | 1502 | 1577 |
| Coal | 80 | 1174 | 1438 |
| Lower Guyandotte | 99 | 1104 | 1299 |
| Upper Guyandotte | 43 | 690 | 825 |
| Little Muskingum-Middle Island | 15 | 1348 | 1427 |
| Little Kanawha | 106 | 3837 | 4418 |
| Twelvepole | 133 | 813 | 1042 |
| Tug | 127 | 428 | 673 |
| Lower New | 28 | 610 | 688 |
| Big Sandy | 16 | 79 | 120 |
| Upper Ohio | 0 | 6 | 7 |
| Youghiogheny | 8 | 77 | 108 |
| Upper James | 0 | 174 | 178 |
| Gauley | 44 | 2706 | 3455 |
| Middle New | 12 | 1094 | 1273 |
| Greenbrier | 17 | 2032 | 2454 |
| Cheat | 10 | 2875 | 3013 |

3. NHD Editing Feedback – We solicited feedback from stakeholders by using a web application and listserv
- a. Web application for feedback – We published the updated NHD data as a [web application](#) for feedback by stakeholders. The web app shows streams and waterbodies in all watersheds in West Virginia. In the web app, stakeholders can click on a segment and add comments about the modifications that needs to be done. Detailed instructions to add comment are also available in the web app. We received feedbacks from reviewers and incorporated the changes in the NHD dataset.
 - b. Revisions from DEP – We received shapefiles of flagged NHD stream segments for review from DEP. The shapefiles included stream modifications for landfills, stream modifications for Total Maximum Daily Loads (TMDL), and stream modifications from Technical Applications and GIS unit (TAGIS). Table 3 shows details about the flagged segments received from DEP. We reviewed the total of 322 stream segments across the state. We have modified 219 NHD stream segments, added 18 new segments, and deleted 8 segments. Some other segments in the vicinity of flagged NHD segments were also modified or deleted accordingly. Figure 2a shows a stream segment that was not flagged but we modified as it was going through residential buildings. A pond next to this stream segment was also added. Figure 2b shows the updated stream segment and added pond.

Figure 2a: Non-flagged stream segment in a part of Little Mushkingum Middle Island



Figure 2b: Modified non-flagged stream segment and added pond in a part of Little Muskingum Middle Island

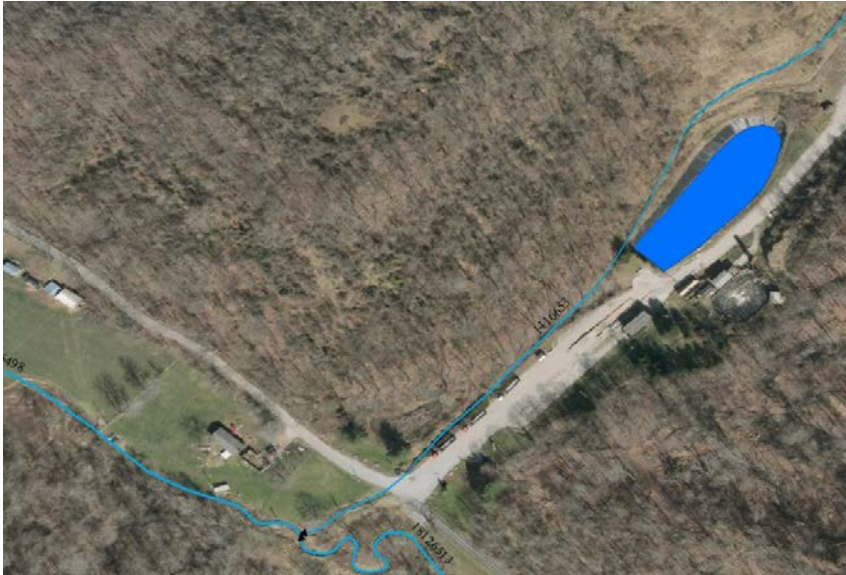


Table 3: Details of edits received from DEP for all watersheds

| Watershed | Shapefile | No. of Edits |
|--------------------------------|-----------|--------------|
| Big Sandy | TMDL | 3 |
| Cacapon-Town | TAGIS | 2 |
| | Landfills | 2 |
| Cheat | Landfills | 5 |
| Coal | Landfills | 2 |
| Conococheague-Opequon | TAGIS | 3 |
| | Landfills | 4 |
| Elk | Landfills | 2 |
| Gauley | TAGIS | 1 |
| | Landfills | 2 |
| Greenbrier | TAGIS | 7 |
| | Landfills | 2 |
| Little Kanawha | Landfills | 1 |
| | TMDL | 37 |
| Little Muskingum-Middle Island | TAGIS | 1 |
| | Landfills | 1 |
| Lower Guyandotte | Landfills | 8 |
| Lower Kanawha | Landfills | 6 |
| Lower New | TAGIS | 2 |
| | Landfills | 3 |
| Middle New | TAGIS | 3 |
| | Landfills | 2 |
| North Branch Potomac | TMDL | 2 |
| Raccoon-Symmes | TAGIS | 1 |
| | TMDL | 16 |
| South Branch Potomac | Landfills | 4 |
| Tug | Landfills | 4 |
| Twelvepole | TMDL | 26 |
| | TMDL | 75 |
| Tygart Valley | TAGIS | 2 |
| | Landfills | 4 |
| Upper Guyandotte | TMDL | 61 |
| Upper Kanawha | TAGIS | 2 |

| | | |
|---------------------|-----------|---|
| | Landfills | 4 |
| Upper Monongahela | Landfills | 5 |
| Upper Ohio | Landfills | 1 |
| | TMDL | 1 |
| Upper Ohio-Shade | Landfills | 2 |
| Upper Ohio-Wheeling | TAGIS | 1 |
| | Landfills | 3 |
| West Fork | Landfills | 5 |

Future Work

We will continue to update NHD with further edits should we receive further revisions from stakeholders. Please contact me or Kurt Donaldson (kdonalds@wvu.edu) if you have any questions.

Stakeholders

Following is a list of stakeholders in West Virginia

| | Name | Email | Agency |
|----|-------------------|--------------------------------|------------------------------|
| 1 | Todd Fagan | tfagan@jeffersoncountywv.org | Jefferson County |
| 2 | Jessica Gormont | jgormont@jeffersoncountywv.org | Jefferson County |
| 3 | Jessica Perkins | jessica.d.perkins@wv.gov | WV DNR |
| 4 | Jared Beard | jared.beard@wv.usda.gov | USDA-NRCS |
| 5 | Wendy Noll | Wendy.Noll@wv.usda.gov | USDA-NRCS |
| 6 | Jason Bladow | Jason.Bladow@wv.usda.gov | USDA-NRCS |
| 7 | Yueming Wu | Yueming.Wu@wv.gov | WV DOH |
| 8 | Douglas Kirk | Douglas.W.Kirk@wv.gov | WV DOH |
| 9 | Mike Shank | michael.c.shank@wv.gov | WV DEP |
| 10 | Chris Daugherty | Chris.A.Daugherty@wv.gov | WV DEP |
| 11 | Elizabeth Byers | Elizabeth.A.Byers@wv.gov | WV DEP |
| 12 | John Wirts | John.C.Wirts@wv.gov | WV DEP |
| 13 | Patrick Campbell | Patrick.V.Campbell@wv.gov | WV DEP |
| 14 | Lisa King | Lisa.A.King@wv.gov | WV DHHR |
| 15 | Dustin Lowers | Dustin.E.Lowers@wv.gov | WV DHHR |
| 16 | Tony Simental | Tony.A.Simental@wv.gov | WV Office of GIS Coordinator |
| 17 | Jacquelyn Strager | JMStrager@mail.wvu.edu | NRAC |
| 18 | Katherine Paybins | Chris.A.Daugherty@wv.gov | USGS |
| 19 | Craig Neidig | cneidig@usgs.gov | USGS |
| 20 | Tatyana Dimascio | tdimascio@usgs.gov | USGS |
| 21 | William Smith | wjsmith@usgs.gov | USGS |
| 22 | J Sharpe | jbsharpe@usgs.gov | USGS |
| 23 | Sam Lammie | slammie@fs.fed.us | USFS |
| 24 | James Seay | James.Seay@ky.gov | Kentucky Division of Water |
| 25 | Randy Peck | crpeck@mix.wvu.edu | WVGISTC |
| 26 | Prgaya Srivastava | prsrivastava@mix.wvu.edu | WVGISTC |
| 27 | Kurt Donaldson | Kurt.Donaldson@mail.wvu.edu | WVGISTC |
| 28 | Maneesh Sharma | Maneesh.Sharma@mail.wvu.edu | WVGISTC |

Sincerely,
 Maneesh Sharma
 GIS Project Lead
 WV GIS Technical Center, WVU
 Email: Maneesh.sharma@mail.wvu.edu

Appendix 1

NHD Editing Methodology

The NHD edits were done in two major steps. In the first step, we created a shapefile of flagged stream segments for West Virginia that needed to be reviewed. Streams for verification and modifications were identified using pre-existing reference data from FEMA, WVDEP, WVDOT, and the Natural Resources Analysis Center (NRAC) and WV GIS Technical Center (WVGISTC) located at West Virginia University. The flagged streams denote cases like streams going through highways, streams outside of floodplain, streams course change due to surface mining, braided streams, and streams that no longer exist. For instance, the streams going through highways, bridges, and roads were flagged by intersecting the stream layer with roads layer from WVDOT, the streams in surface mining areas were flagged by intersecting the stream layer with valley fill and permit boundary layers from WVDEP, and the streams outside of floodplains were flagged by intersecting stream layer with floodplain layer from FEMA. All flagged streams were reviewed for each watershed and edits were made accordingly. Review of all flagged stream segments and necessary edits were done using ArcGIS tools and local shapefiles. Specifically, we used the flow accumulation layer, local hydrolines, U.S. Census/WVDOT roads, floodplain layers, permit boundary and valley fill area layers, 3D elevation layer, and best available leaf-off aerial imagery for edits. The edits were categorized into five categories: MODIFY, REPLACE, DELETE, FP-ERROR (floodplain error), NO CHANGE. The segments categorized as MODIFY, REPLACE, DELETE, and FP-ERROR were exported as a separate shapefile to be used for the second step.

In the second step, we used the NHD Update Tool (version - 6.3.3.2) for ArcGIS 10.3.1 for the edits. The NHD production data for each watershed were downloaded from the NHD/WBD steward website (<https://usgs-mrs.cr.usgs.gov/usgssteward/>). Using NHD tools in ArcMap, the changes were made in the downloaded dataset with the help of an exported shapefile in the previous step. After making the edits and successfully executing a quality control check, the NHD data was submitted back to USGS for further review.

Below is a brief description about some of the modifications that were made in NHD flowlines of the NHD database.

Stream modification in Surface Mining Areas

Figure 1 shows an example of a surface modification due to surface mining. This surface modification has resulted in an altered stream flow pattern. Red lines show the existing stream segments in the NHD database. These stream segments do not represent the correct stream flow. We modified the streams to represent the current flow pattern. Blue lines show the current stream pattern.

Figure 1: Example of deleted and modified stream segments in a part of Gauley watershed



Other example of changes in surface mining affected areas can be seen in Figure 2. This figure represents a flagged stream, symbolized as red line, running in the middle of two side rip-raps in a coal mining area in Coal watershed. Due to the surface disturbance the original course of the stream was changed by creating rip-raps. New stream segments were added to represent the modified flow pattern. These are symbolized as blue lines.

Figure 2: Example of modified stream segments in a surface mining area in a part of Coal watershed



Stream Modification due to Urban Development

Urban development can also cause stream modifications to occur. Typically, these stream segments were either removed or water course completely changed due to the construction in urban or suburban areas. These kinds of stream segments were deleted and new stream segments were added. Figures 3 and figure 4 represent examples of such condition. The deleted stream segments are symbolized as red lines and added or modified stream segments are symbolized as blue lines.

Figure 3: Example of deleted and added stream segments in a part of Little Muskingum watershed



Figure 4. Example of a modified stream segment in a part of Lower Kanawha watershed



In many cases, new stream segments and connected waterbodies were added. These waterbodies include naturally occurring waterbodies as well as human-made waterbodies. Figure 5 shows a newly added stream segment and connected waterbody in a part of North Brach Potomac watershed. The newly added stream segment is represented as blue line. The red lines represent flagged streams for review.

Figure 5: Example of an added stream segment and connected waterbody in a part of North Brach Potomac watershed



Generally, USGS expects stream segment modification if a stream is more than 30 meters away from its actual location on the aerial imagery but, in some cases, the streams were going through the houses or other infrastructures. In such cases, the streams were modified even if they were less than 30 meters away from their actual location. Figures 6 and 7 represent examples of such conditions. The flagged streams are represented as red lines and modified streams are represented as blue line.

Figure 6: Example of modified stream cutting through a house in a section of Cheat watershed



Figure 7: Example of modified stream cutting through infrastructures in a part of Cheat watershed

